

FOR BEST RESULTS  
KEEP IT LIGHT !

SINGLE ROTOR BLADE

THRUST WASHER

POSITION OF MOTOR STICK

# UP-SHOT

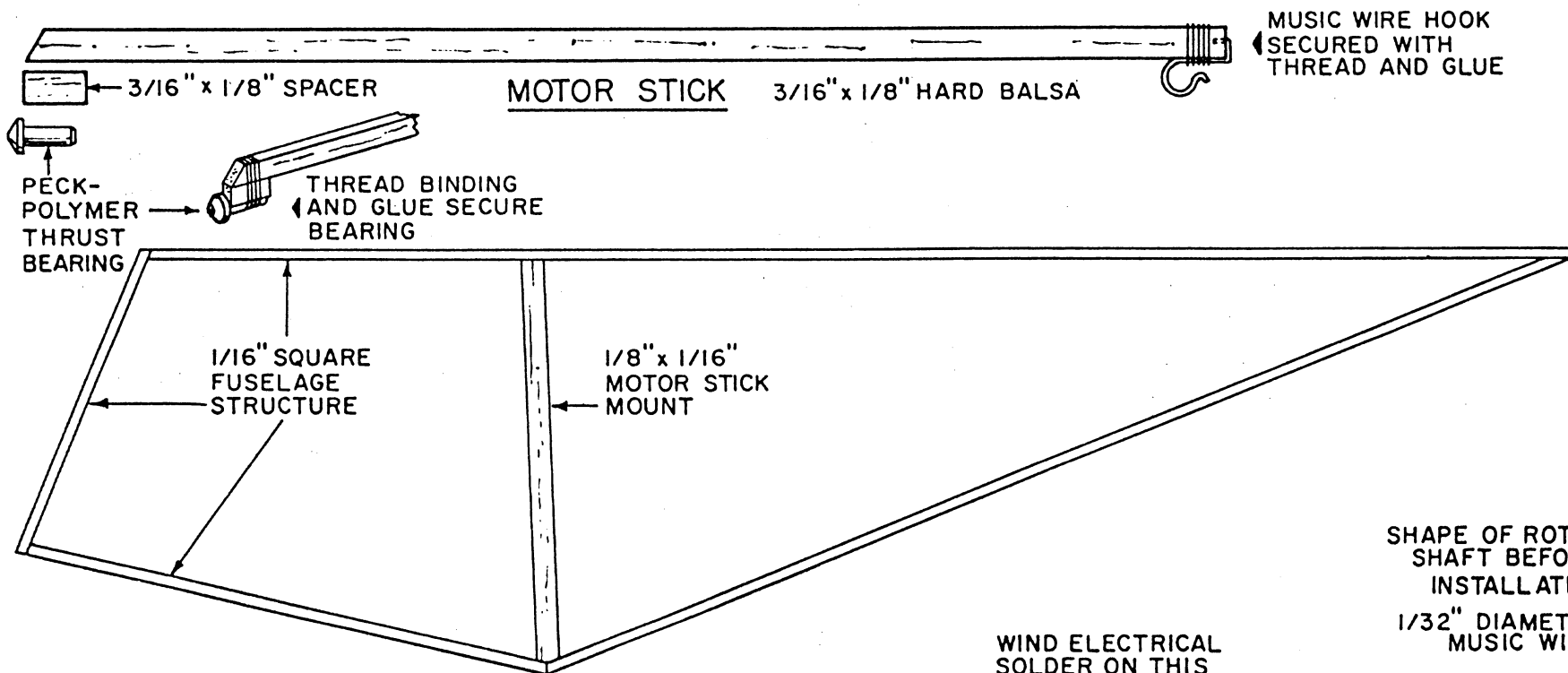
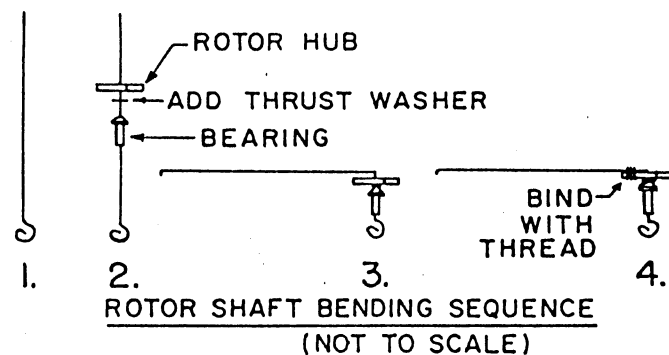
## JUST FOR FUN:

AFTER BUILDING AND FLYING "UP-SHOT", TRY THESE EXPERIMENTS:

1. ADD MORE POWER
2. REDUCE ROTOR BLADE PITCH
3. TRY LONGER AND SHORTER BLADES
4. ALTER ANGLE OF COUNTERWEIGHT ARM FOR BETTER DYNAMIC BALANCE

FRONT VIEW  
(NOT TO SCALE)

CUT FUSELAGE COVERING FROM PLAN  
OR TRACE COPY ON TO LIGHT PAPER.  
COLOR WITH FIBER POINT PENS.

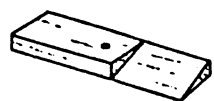


ALL WOODEN PARTS ARE BALSA  
POWER: ONE LOOP 3MM PIRELLI

WIND ELECTRICAL  
SOLDER ON THIS  
END OF ARM TO  
COUNTERBALANCE  
ROTOR BLADE  
SECURE WITH GLUE

SHAPE OF ROTOR  
SHAFT BEFORE  
INSTALLATION  
1/32" DIAMETER  
MUSIC WIRE

SHAPE OF ROTOR SHAFT  
AFTER INSTALLATION



PERSPECTIVE



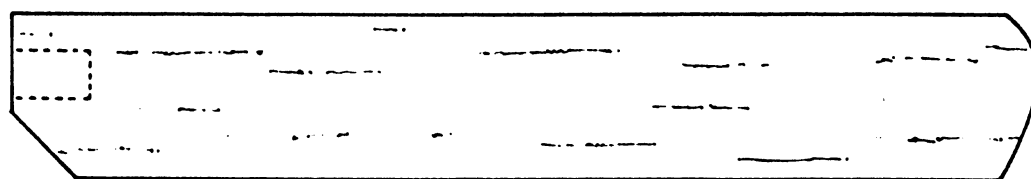
TOP VIEW

ROTOR HUB



FRONT VIEW

END  
VIEW



ROTOR BLADE 3/32" SHEET

ROTOR BLADE  
AIRFOIL

SINGLE BLADE  
RIGID ROTOR HELICOPTER

BY BILL HANNAN

© 1973 BY W.C. HANNAN