

STUBBLE - JUMPER

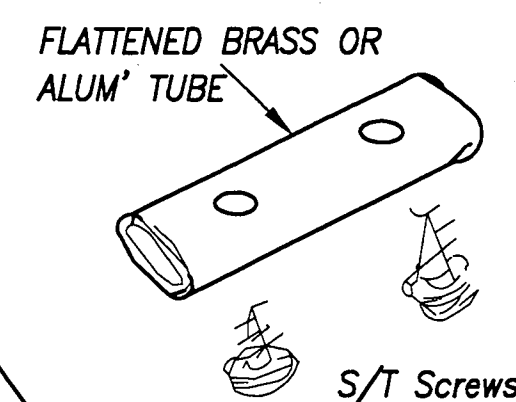
Designed by Peter Miller

A 50" SPAN SPORTS MODEL FOR
0.12 TO 0.15 SIZED ENGINES

TIMBER IS BALSA UNLESS NOTED OTHERWISE

COMPLETE THE FUSELAGE BEFORE CUTTING
THE PLAN TO BUILD THE WING PANELS

TAIL SKID ASS'Y



16swg WIRE SKID

S/T Screws

F1 1/4" Ply

3/8" Sq h/w drilled to clear nipple body
ply plate drilled for strut clearance

struts made from cycle spokes

bind & solder
diagonal strut

F4

clear windscreen

3/32" cockpit floor

scrap balsa headrest

3/32" sht turtle decking

Fuselage sides from 3/32"

dotted lines indicate
snake positions

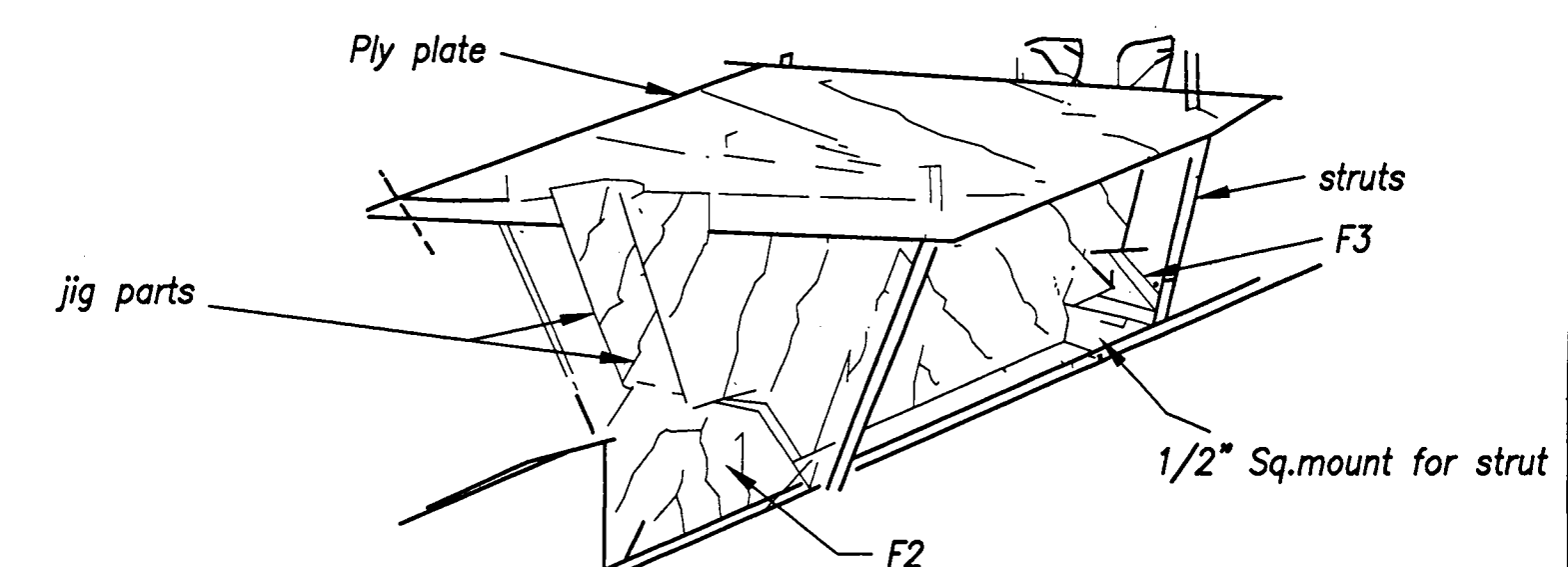
extent of Fin

scrap block fairing either side of Fin

3/32" Tailplane platform

scrap tail-post

1/8" ply mount
for tailskid



Tack-glue the jig parts to ply Wing Plate then tack-glue to Fuselage
as shown in sketch with struts in place to aid alignment. Bind strut
below washer with wire and solder & add diagonal struts. Remove plate
for installation in wing & remove struts until after covering.

JIG from stiff card, plastic sheet or ply
for strut assembly

1/32" PLY DOUBLER INDICATED
FUSELAGE SIDES INDICATED

1/16" ply hatches from F-1 to *-2
and F2 to F3

3" WHEELS

1/4" Sq spruce
for hatch screws

F2

1/2" Sq hardwood strut-mounts

F3

F4

F5

F6

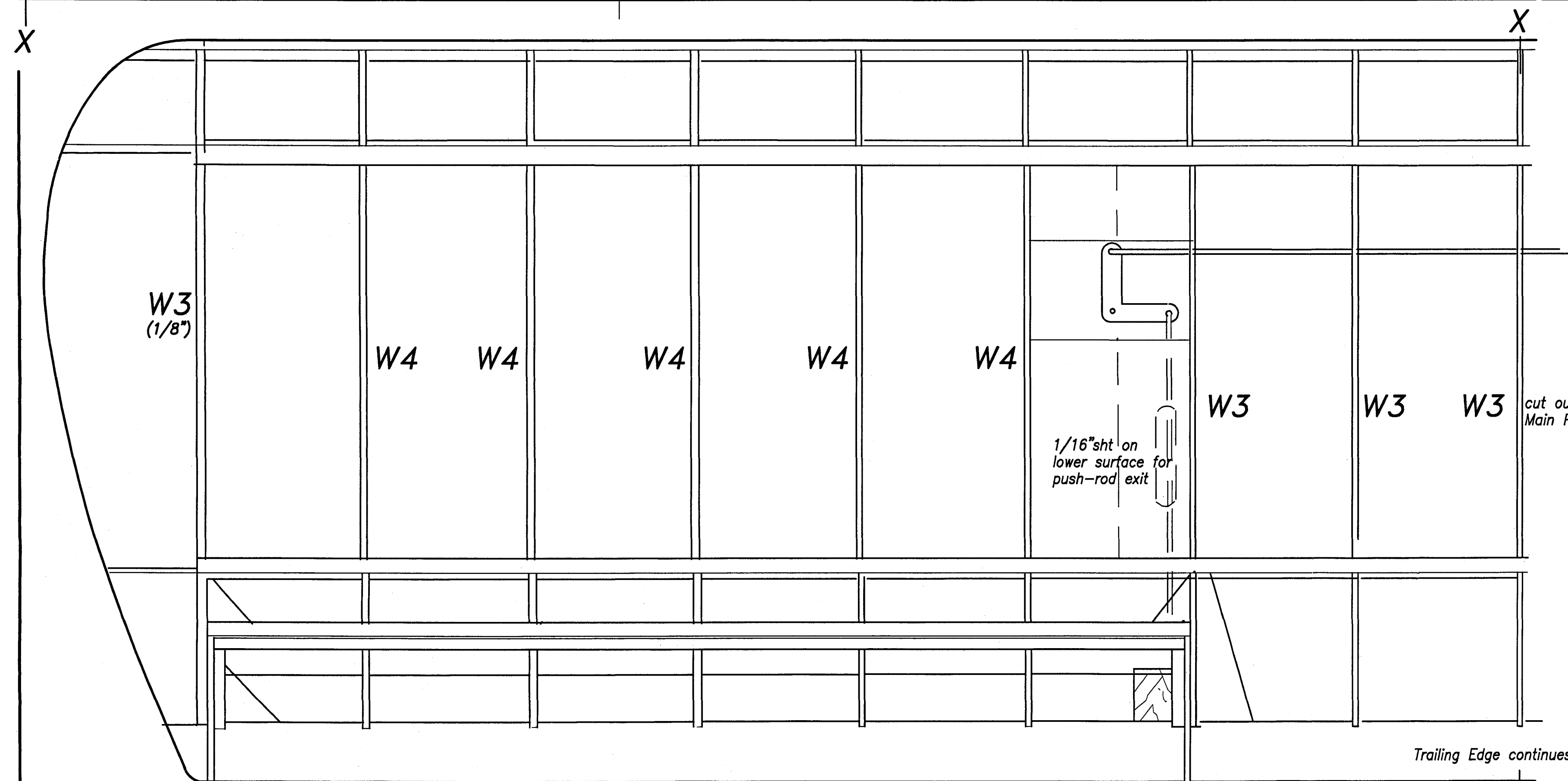
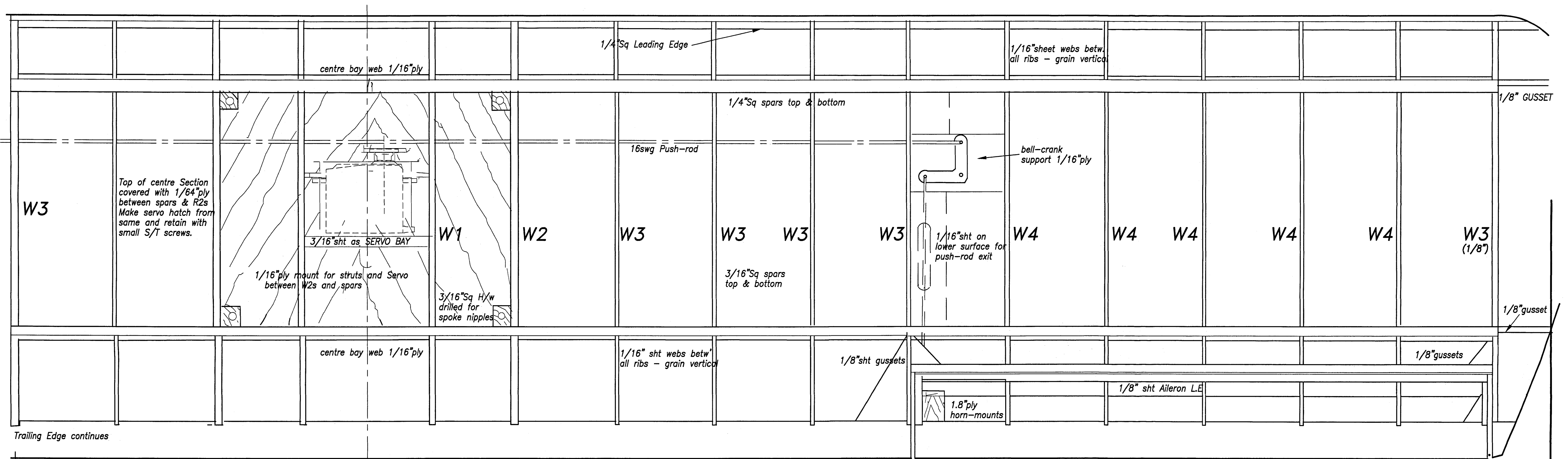
F7

TAILPLANE MOUNT 1/8"

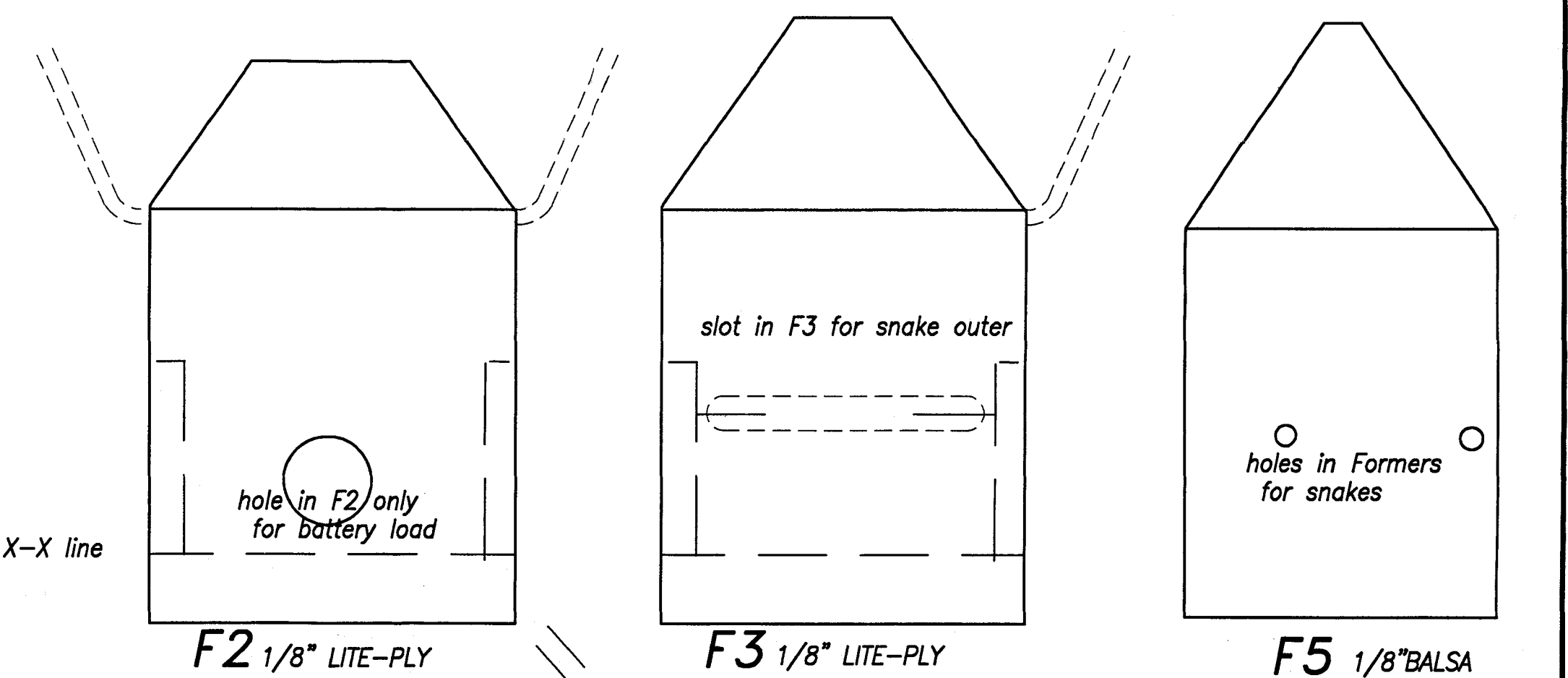
TIMBER IS BALSA UNLESS NOTED OTHERWISE

SHEET ONE

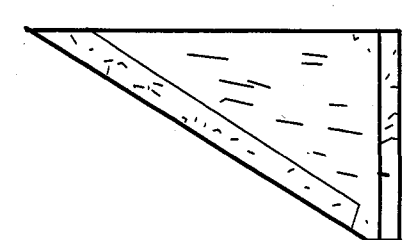
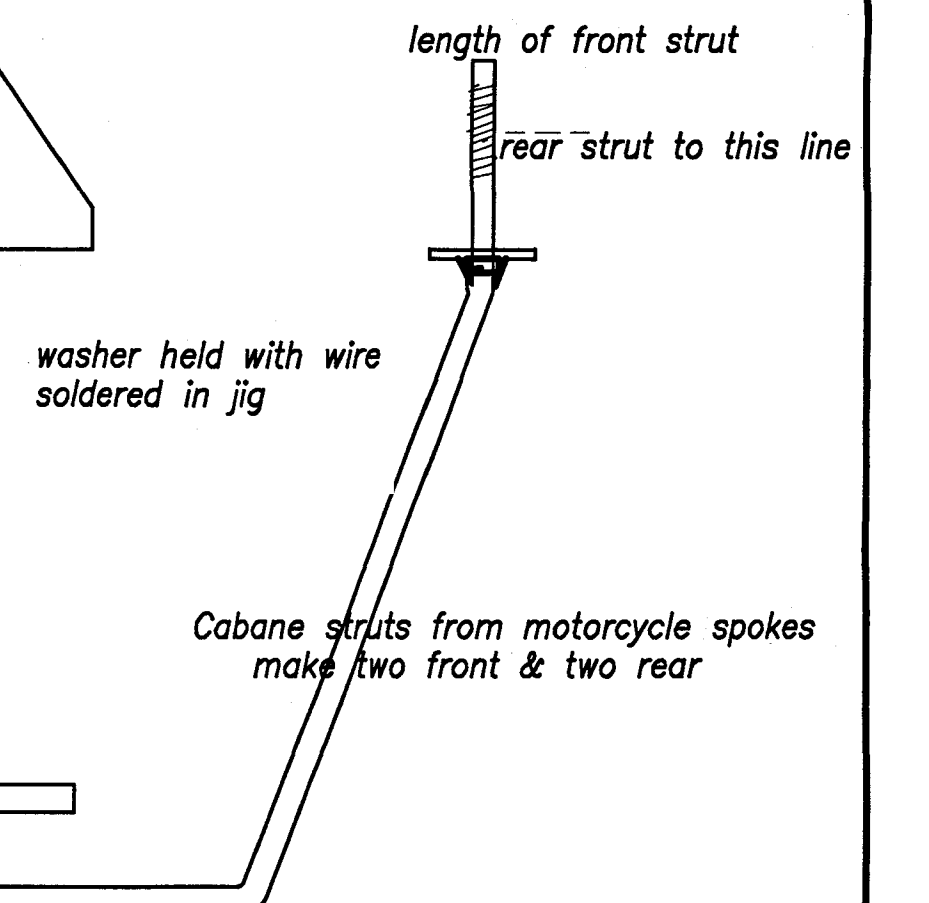
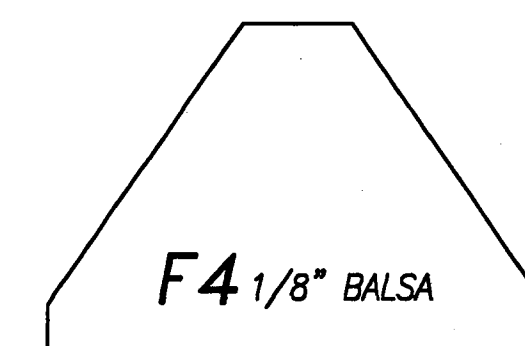




NO DIHEDRAL IS NEEDED SO THE WING CAN BE BUILT IN ONE PIECE
COMPLETE THE FUSELAGE CONSTRUCTION FIRST



U/C TEMPLATE
10 swg - MAKE ONE LEFT - ONE RIGHT



TIP SECTION

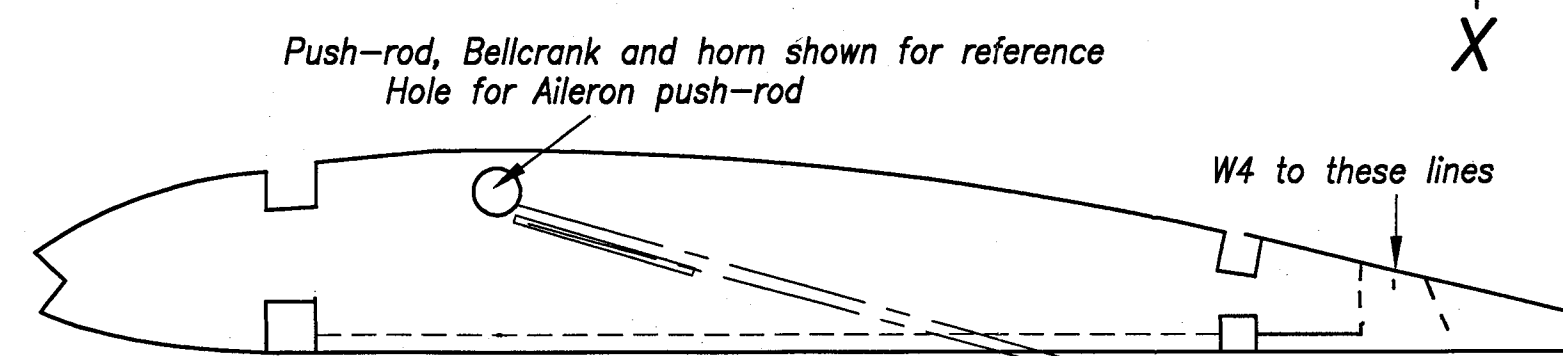
STUBBLE JUMPER
SHEET TWO

1/8" RIBS

2 OFF W-1
2 OFF W-2
2 OFF W-3

1/16" RIBS

8 OFF W-3
10 OFF W-4



SECTION THROUGH
AILERON HINGE