

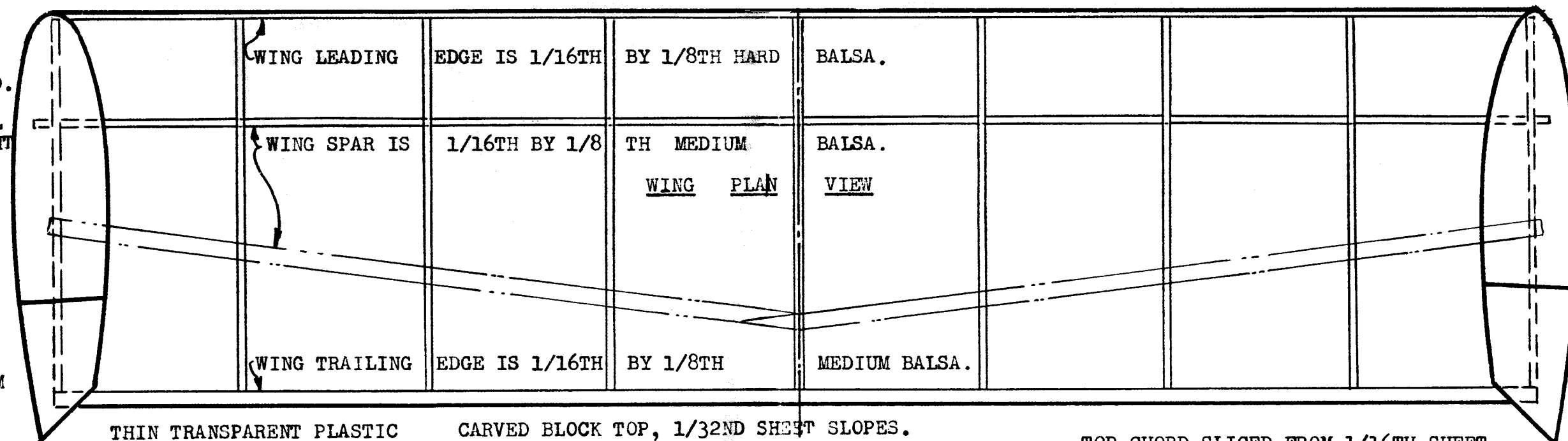
ALL PARTS ARE  
BALSA UNLESS  
OTHERWISE NOTED.

COVER THE MODEL  
WITH LIGHTWEIGHT  
TISSUE.

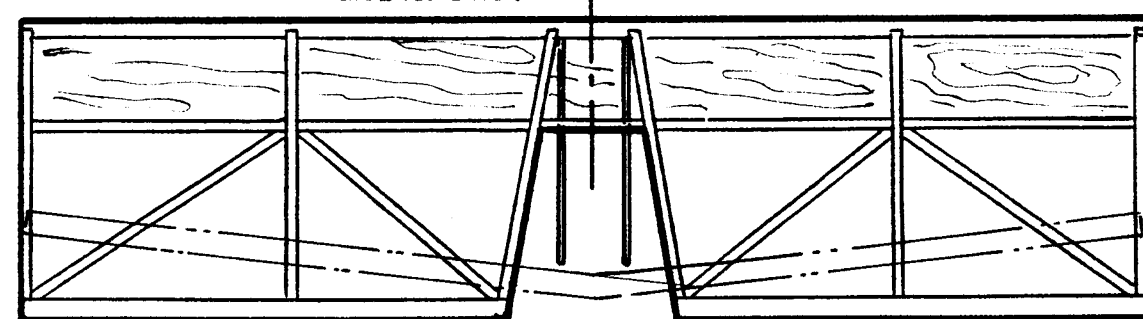
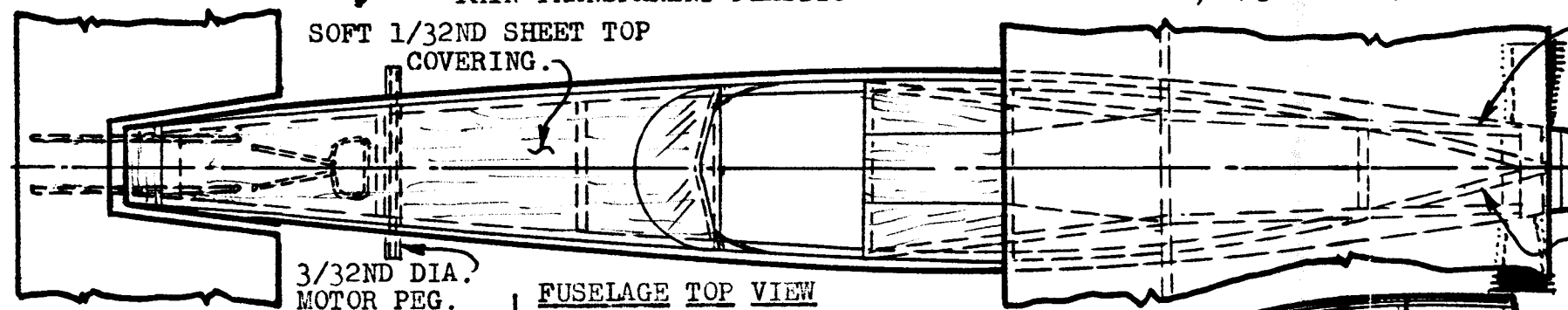
ALL WIRE PARTS  
ARE .020  
DIAMETER.

USE  $\frac{1}{2}$  INCH IN  
DIAMETER BALSA  
WHEELS.

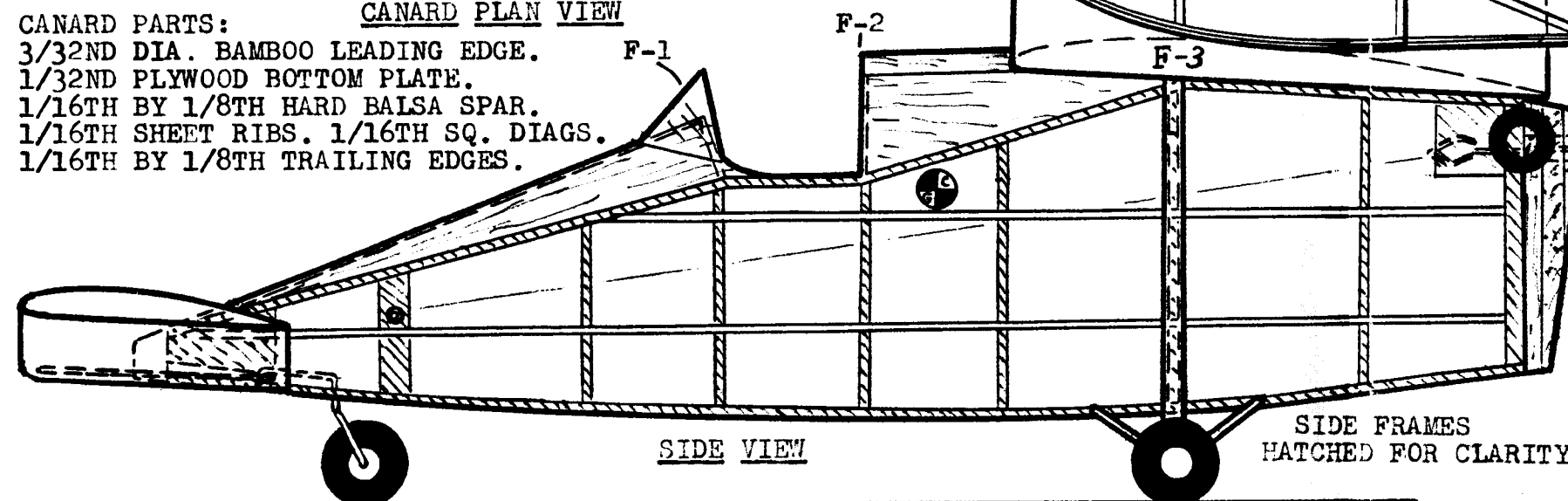
MOTOR PEG IS  
 $\frac{3}{32}$ ND ALUMINUM  
TUBE.



THIN TRANSPARENT PLASTIC CARVED BLOCK TOP,  $\frac{1}{32}$ ND SHEET SLOPES.



CANARD PARTS:  
 $\frac{3}{32}$ ND DIA. BAMBOO LEADING EDGE.  
 $\frac{1}{32}$ ND PLYWOOD BOTTOM PLATE.  
 $\frac{1}{16}$ TH BY  $\frac{1}{8}$ TH HARD BALSA SPAR.  
 $\frac{1}{16}$ TH SHEET RIBS.  $\frac{1}{16}$ TH SQ. DIAGS.  
 $\frac{1}{16}$ TH BY  $\frac{1}{8}$ TH TRAILING EDGES.



TOP LONGERON

BOTTOM LONGERON

VERTICAL  
TAIL PLAN

TOP CHORD SLICED FROM  $\frac{1}{16}$ TH SHEET.

BOTTOM CHORD IS  $\frac{1}{16}$ TH SQUARE.  
WING RIB PATTERN.

UPPER TAIL RIB  $\frac{1}{16}$ TH THICK.

LOWER TAIL RIB  $\frac{1}{16}$ TH THICK

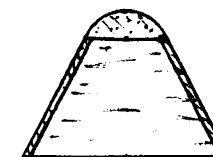
LAMINATED TAIL OUTLINE,  
 $\frac{1}{16}$ TH SQ. SPARS AND  
TRAILING EDGE.

CANARD AIRFOIL

CUT DOWN SLEEK STREAK PROPELLER MODIFIED  
TO WORK AS A PUSHER.

$\frac{1}{8}$ TH SHEET  
LAMINATIONS

THRUST BLOCK  
DETAIL



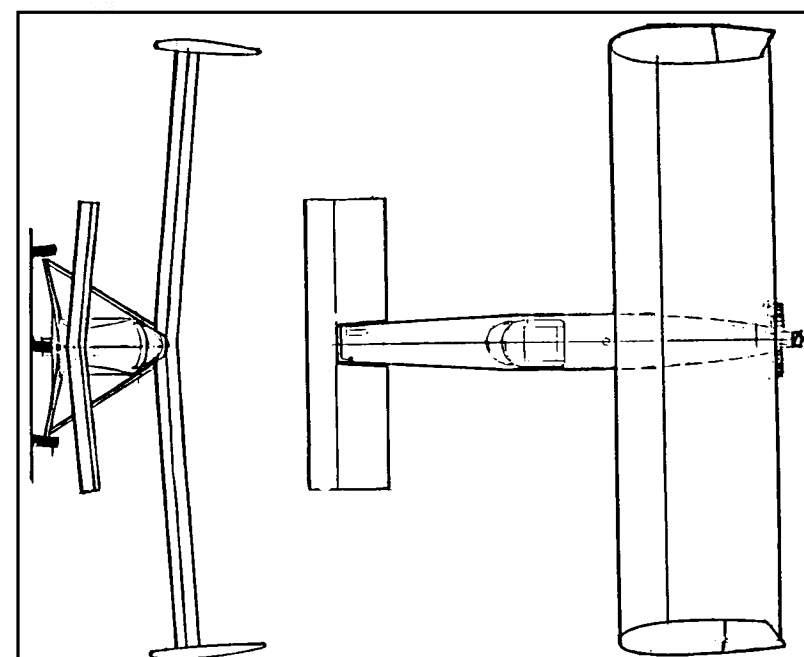
F-2



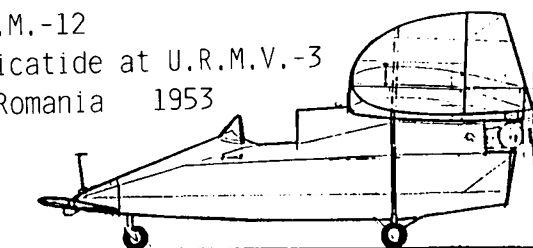
F-1



F-3



R.M.-12  
By Radu Manicatide at U.R.M.V.-3  
at Brasov, Romania 1953



RM-12

Halt Mooney 08-29-87